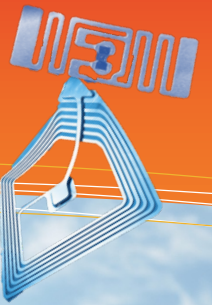




EMERGENCY MANAGEMENT SOLUTION



ABOUT RFID4U

VERTICALS

- Agriculture
- Oil & Gas
- Healthcare & Pharma
- Government
- Manufacturing
- Wearables
- Construction

APPLICATIONS

- Asset Tracking
- Inventory Management
- Returnable Asset Tracking
- Anti-Counterfeiting
- Uniform Tracking
- Event Management
- Mustering & Emergency Management
- Personnel Tracking
- Time Tracking
- Supply Chain Management
- JIT Delivery and many more.

OUR SERVICES

- Business Case Development
- Site Survey
- System Design
- Software Design and Development
- Implementation
- Troubleshooting
- Training
- Maintenance
- Consulting
- Benchmarking
- Project Management
- Device Tuning
- Network Cabling
- Software Installation and Configuration
- Risk, Security and Vulnerability Assessment

TECHNOLOGIES WE USE

- RFID
- NFC
- GPS
- Mobility
- Barcode
- iOS, Android, Windows



END-TO-END SOLUTIONS USING RFID, NFC AND MOBILITY TECHNOLOGY DESIGN ~ SOFTWARE DEVELOPMENT ~ DEPLOYMENT ~ TRAINING

RFID4U develops leading business intelligence solutions using RFID, NFC and Mobility technologies. Using its TAGMATIKS sensory adaptive network software platform, RFID4U delivers significant improvements in efficiency of business processes and develops new capabilities within industrial, healthcare, agriculture and social verticals that bring not only higher revenues, but also increased quality, safety and customer satisfaction. Our customers include Johnson & Johnson, Fitbit, HP, Northrop Grumman, and the Department of Defense among others.

To monitor and manage employee safety and access control, RFID4U has developed an Emergency Management and Mustering System (EMS) using RFID technology and TAGMATIKS, our cutting-edge enterprise, cloud-ready sensory adaptive network software platform, that enables rapid deployment and integration of scalable, real-time visibility solutions.

In the EMS system, all readers report data to a centralized server that provides real-time reports on personnel movement within mapped areas and issues alerts in case of emergency. The system delivers an automatic headcount and each worker's location at any time. It also provides an option for manual updates through the mustering station handhelds or PDAs if the server were to go offline and automatic updates sent to the server, when it comes online.



HARDWARE

RFID system uses **RFID personnel tags** that are issued to all employees and visitors entering the facility. These are usually in form of a key fob or a badge and some can also include a slot to insert a visual identification card. In some cases, tags can be placed on safety helmets.

System Features & Benefits

- Real-time Visibility of Personnel at All Locations & Times
- Dashboards and Reports
- A map of locations
- List of persons/tags issued per location
- Number of total active persons
- Number of persons currently on site
- Tag Assignment and Printing
- Detailed Info for Person
- Identification and Contact
- Alerts to Key Personnel (Text, Email)

RFID readers and antennas are strategically placed within the facility, usually around key building assembly areas and ingress and egress points. The density of RFID read points depends on the technology.

NEED HELP WITH YOUR SOLUTIONS OR MORE DETAILS?

CONTACT US!

1. Scan the QR Code
2. Visit our website: www.rfid4u.com
3. Call Us: 408-739-3500



Copyright 2016 RFID4U All Rights Reserved.



RFID4U
2334-C Walsh Avenue
Santa Clara, CA 95051, USA
Phone 408-739-3500
Fax 408-739-3502
E-mail: info@rfid4u.com
Web: www.rfid4u.com